

## Community Involvement



### Volunteer work

We regularly hold a neighborhood cleanup in Nagasaki!

Since 2013, we have been holding a cleanup in Dejima area and along the Nakashima River, where not only locals but also many tourists visit. We hope that people take rest and make good memories there.

### Donation

We make donations to the cities including our employees' hometowns.

We made donations to the regional revitalization projects as hometown tax. We hope city development with love will be reinforced with this donation.

## A Message from Our CEO

We provide quality consulting service, for each of our engineers creates balance and harmony with nature.



As our corporate philosophy, "Human and Nature, Technology and Imagination," states we have made a progress and grown together with people in Nagasaki on a foundation of the technology and the track record we have built from the social infrastructure development and local infrastructure recovery. I experienced Nagasaki Flood in 1982 and actually worked in the field of the aftermath of the eruption at Mt. Fugendake, Unzen Volcano in 1991. Through those experiences, I witnessed my hometown Nagasaki undergo recovery and restoration with my own eyes. Our ancestors overcame countless difficulties and challenges in history and in many cultures. We must learn and gain new insights from our hometown they have built for us, and it is our responsibility to inherit our valuable hometown to the next generation. Orient ING aims to be the company that discovers attractive and potential new assets of our hometown, and we will lead the next generations to hold high expectations, find inspiration, and find hope in our city. We will continue to strive to the best of our ability to meet your expectations. We'll always be with people and always be with our city.

CEO Yasuhito Nakashima

## Employee Benefits

- 01 **Two-day Weekend System**  
We have employed the system since 2018.
- 02 **Incentives**  
Bonuses are paid twice a year.
- 03 **Company awards**  
"Distinguished Service Award" and "Customer satisfaction Award" are given to the employees along with the bonus.
- 04 **Severance Pay**  
Employees are eligible for the severance pay after six years of service.
- 05 **Support for Skill Development**  
We support the expense necessary to acquire job-related certificates, including seminar fees, textbooks, travel expense etc. (up to 500,000 Yen a year per person).
- 06 **Child-care Leave / Nursing Leave**  
Our employees are encouraged to take child-care leaves.
- 07 **Company housing terms of use**  
Our employees can choose the property and we rent the place for them. We subsidize the deposit and partial amount of the rent (up to 20,000 Yen) until they turn 30 years old.

### Company Overview

Company  
Orient ING Co., Ltd

Established October 1, 1967      Capital 30,000,000 Yen

Employees (Board members not included)  
48 engineers  
13 administration staff members  
61 employees (Male 45, Female 16) in total

**Head Office** 55 Umamachi Nagasaki City, Nagasaki Prefecture, 850-0022  
Call: +81 095(821)5656  
FAX: +81 095(823)4420  
e-mail: info@orient-ing.jp

URL : <https://orient-ing.jp/>  
orient ing

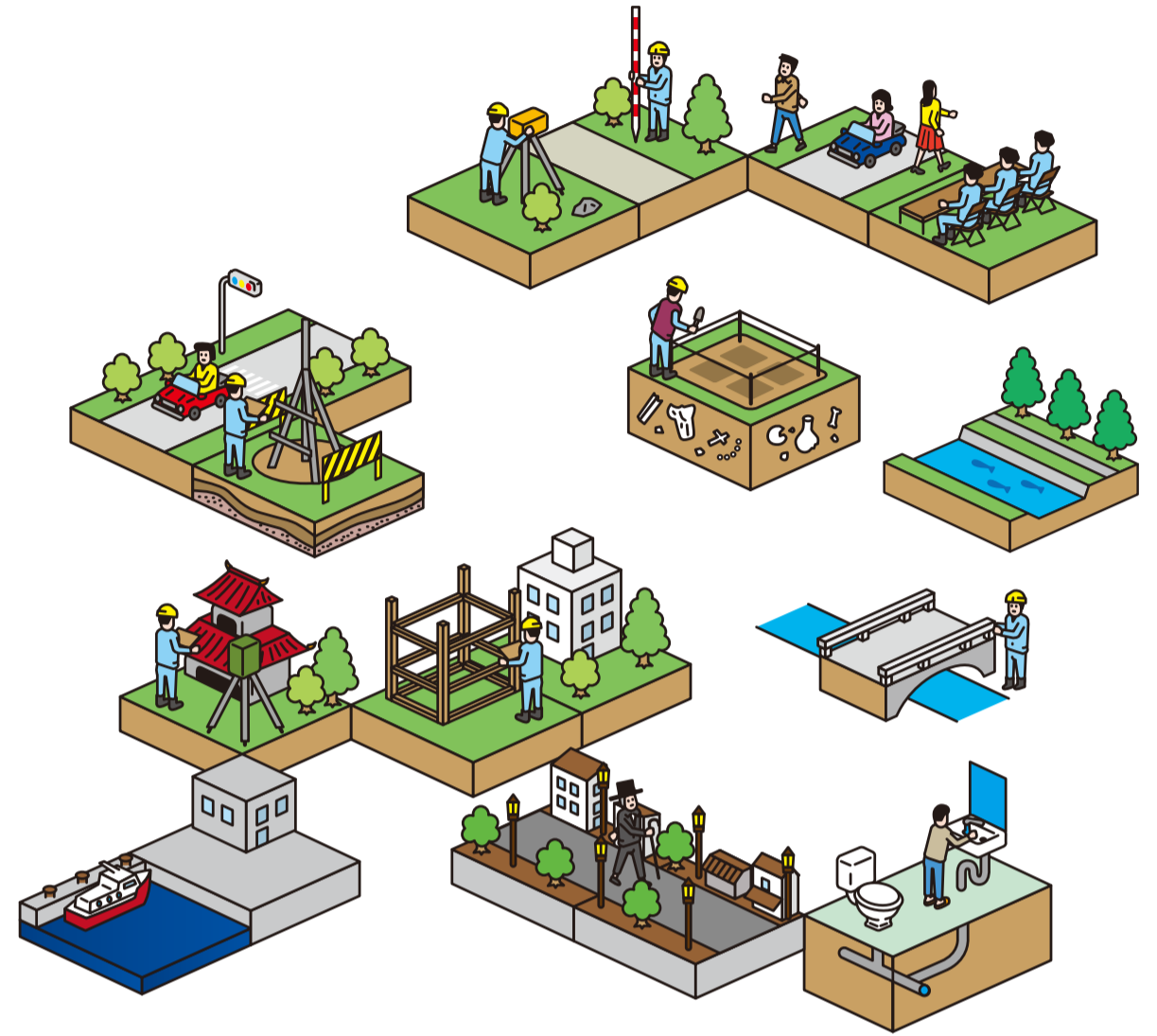
October 2023

Civil Engineering  
Consulting Firm



## Corporate Information

General Information ·  
Business Overview



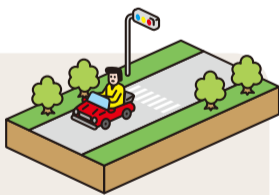
City Development with Love



# Our Expertise

There are five areas of expertise in Orient ING. Our professionals with high expertise form a team by allocating the right person to the right job in order to implement each project. Because we have a solid foundation of our expertise, we are capable of working flexibly on new projects even if there is no precedent.

## Design



### Draw the city

We offer comprehensive civil design by assigning engineers with national certification (Professional Engineers) who are in charge of infrastructure that are indispensable for our lives such as roads, bridges and sewages. Currently, our team consists of Civil Engineers in their 30's and 40's including both men and women.

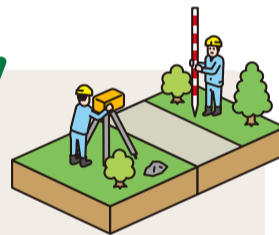
## Geology



### Protect the city

In order to develop a city more solid and secure, as well as to build safe structures and buildings, it is vital to know the ground and geological conditions. Our staff in geological survey department conduct a variety of investigations in advance and make judgement to ensure the solidity. They also work on landslide observation and steep slope protection.

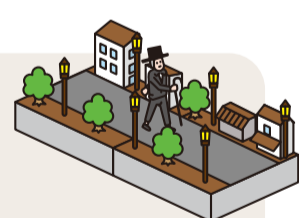
## Survey



### Measure the city

Our company has professionals with a wide range of skillsets including Registered Surveyors with at most 40 years' experience and young technicians in their teens. Each of them plays an important role in various survey projects. Recent years, their domain expands to buried cultural property excavations and 3D laser survey.

## Plan



### Think about the city

In planning phase, we try to solve the problems of cities from multiple viewpoints. We sometimes focus on community development and sometimes suggest the effective way of public relation. We form a team with engineers, architects, designers to discuss the city from tangible and intangible aspects.

## Assessment



### Know the city

Our professional engineers who are familiar with all types of buildings such as housing, public facilities, historic buildings and architectural monuments. They conduct investigation from different angles. The professionals including Registered Architects will respond to your requests.

## TECHNOLOGY TOPICS



### 3D VR

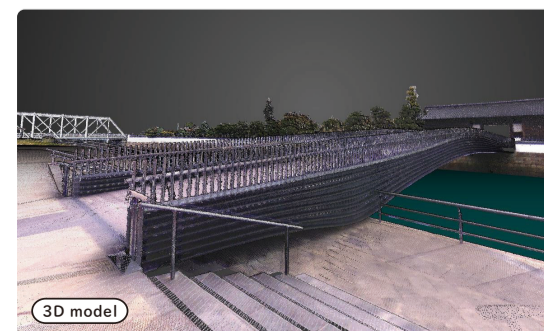
creating more detailed and realistic visualization

We create 3D data from scheme drawings and produce a virtual model of the project plan on the computer. The three-dimensional virtual space can be viewed from every perspective. Furthermore, the plans can be assessed

and revised by editing the data. Since the visualization can be easily shared and understood, it expedites the decision making and the consensus building processes.



Actual site



3D model

3D model of Dejima Footbridge captured by 3D laser scanner

### 3D laser scanner

capturing various objects and saving as 3D data

By setting up the device on the ground and shooting lasers, it collects data such as positions and colors. The collected positional data can be utilized in surveying. The data can be converted into a movie which is useful when we show the rendering of the site to our stakeholders. Moreover, it enables us to preserve 3D data of historical buildings and cultural assets that are difficult to actually measure with traditional measuring approaches.



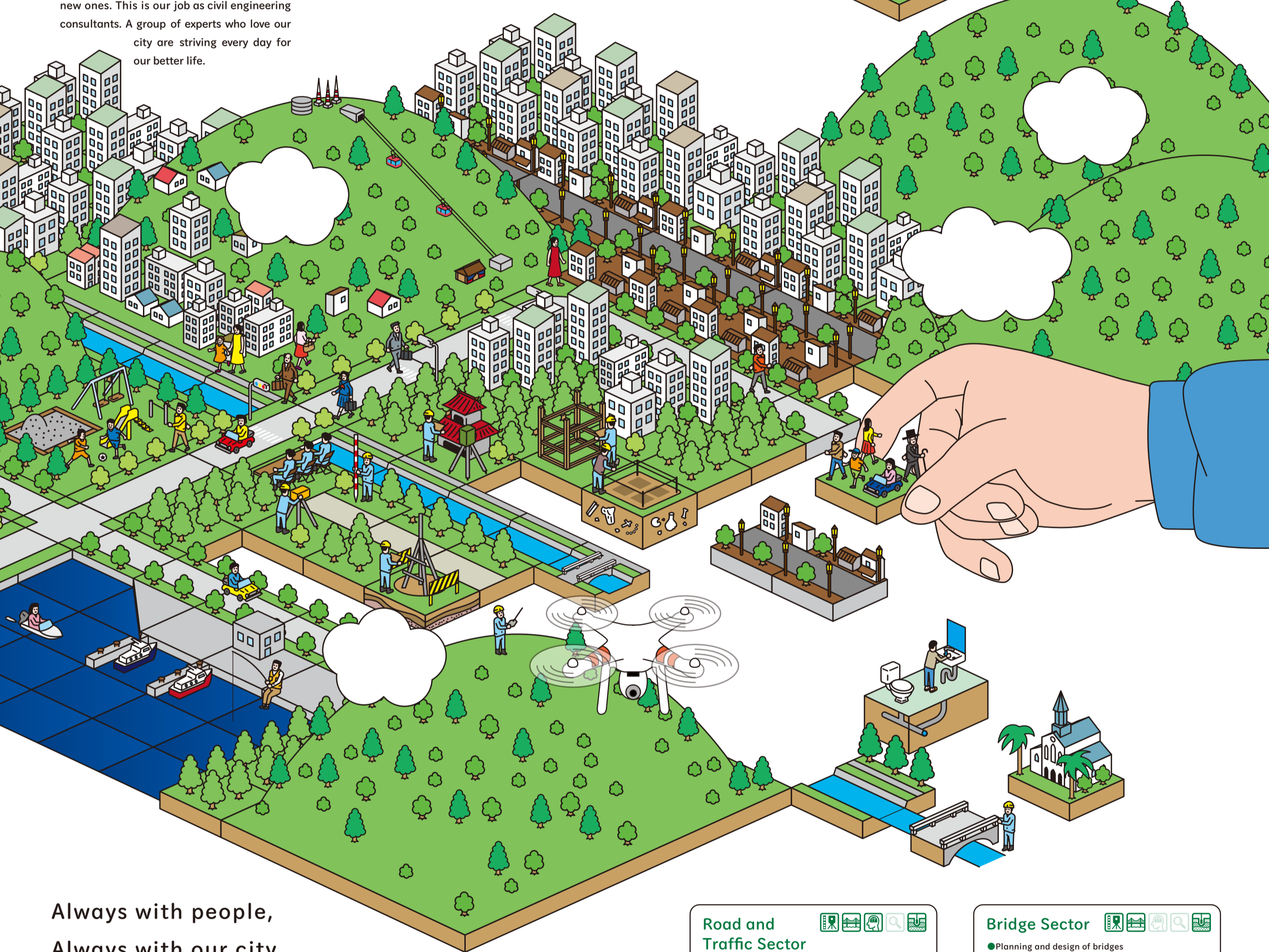
We obtained a comprehensive permit from MLIT\* to fly drones. Also, we have a flight record of more than 100 hours in total.

\*Ministry of Land, Infrastructure, Transport, and Tourism

# Orient ING's Services

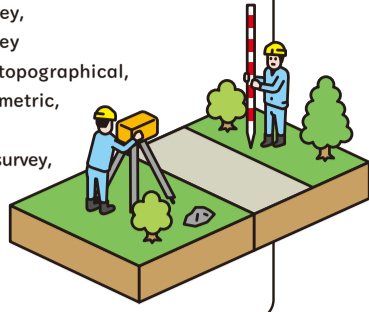
## You can find our works in the changes in the city

One day, you may find your commuting route easier to walk on. Then, you may come across a new park in the neighborhood. Our works are in such changes you discover in the city. Our experienced staff with various expertise are involved in small- and large-scale projects cross-sectionally and multidirectionally in order to develop a safe and comfortable environment. Each of our projects is like a piece of a jigsaw puzzle. By putting the puzzle pieces together, we can complete a big picture of our city where we can live an enriched life. And we always remember to check old pieces and make sure to maintain or replace them with new ones. This is our job as civil engineering consultants. A group of experts who love our city are striving every day for our better life.



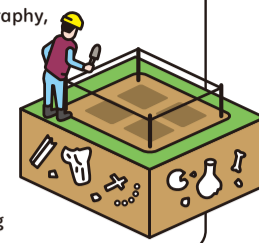
### Survey Sector

- National basic map survey, land readjustment survey
- Control point, leveling, topographical, route, river, land, bathymetric, hydrographic survey
- Cadastral survey, GNSS survey, aerial photogrammetry survey
- Drone photography



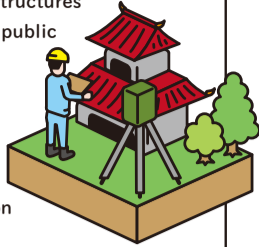
### Cultural Properties Sector

- Excavation and survey of buried cultural property, aerial photography, orthophotos production
- Damage investigation, microtremor measurement
- Historic town planning, conservation and promotion program
- 3D laser scanning and modeling



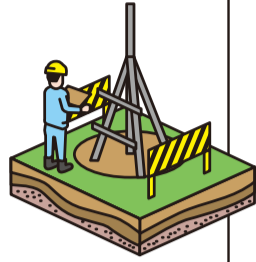
### Compensation Sector

- Compensation on buildings, structures and garden trees affected by public constructions
- Pre- and post- construction monitoring
- Calculation of business loss and cost of transfer of machinery during construction



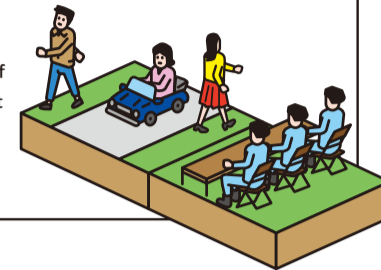
### Geological Investigation Sector

- Soil boring and soil tests
- Subsurface investigation, underground structures investigation
- Steep slope investigation
- Hydrological investigation



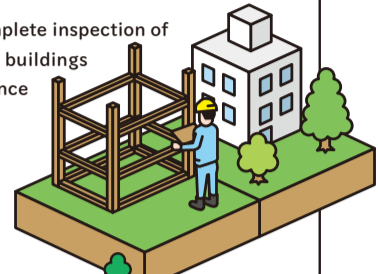
### Planning and Survey Sector

- Traffic census, noise and vibration measurement
- Infrastructure development program and cost-benefit analysis
- Designation/cancellation of reserved forest



### Architecture Sector

- Designing and complete inspection of public and general buildings
- Building maintenance program
- Seismic evaluation and aseismic design

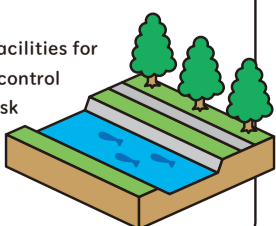


Always with people,  
Always with our city

# orient ing

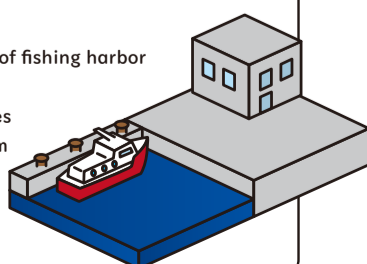
### River Improvement Sector

- River improvement plans
- Planning and designs of facilities for flood control and erosion control
- Assessment of landslide risk
- Cost-benefit analysis



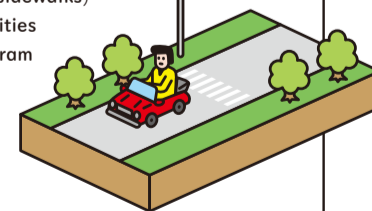
### Fishing Harbor and Port Sector

- Planning and design of fishing harbor and port facilities
- Inspection of facilities
- Maintenance program



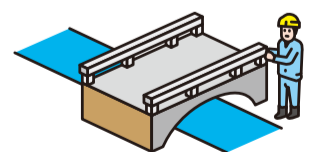
### Road and Traffic Sector

- Planning and design of roads (including intersections and sidewalks)
- Inspection of facilities
- Maintenance program
- Traffic demand forecasting and road traffic simulation



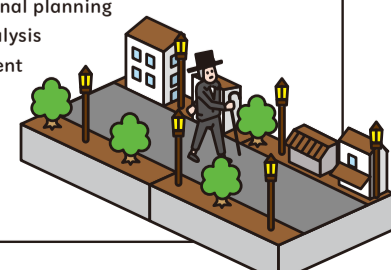
### Bridge Sector

- Planning and design of bridges
- Inspection of facilities
- Maintenance program
- Designs of temporary bridges and other structures



### Urban Planning Sector

- Investigation of the object area
- Urban and regional planning
- Cost-benefit analysis
- Land readjustment projects
- VR 3D modeling



### Water and Sewer Sector

- Planning and design of water and sewer lines
- Inspection of facilities
- Maintenance program

